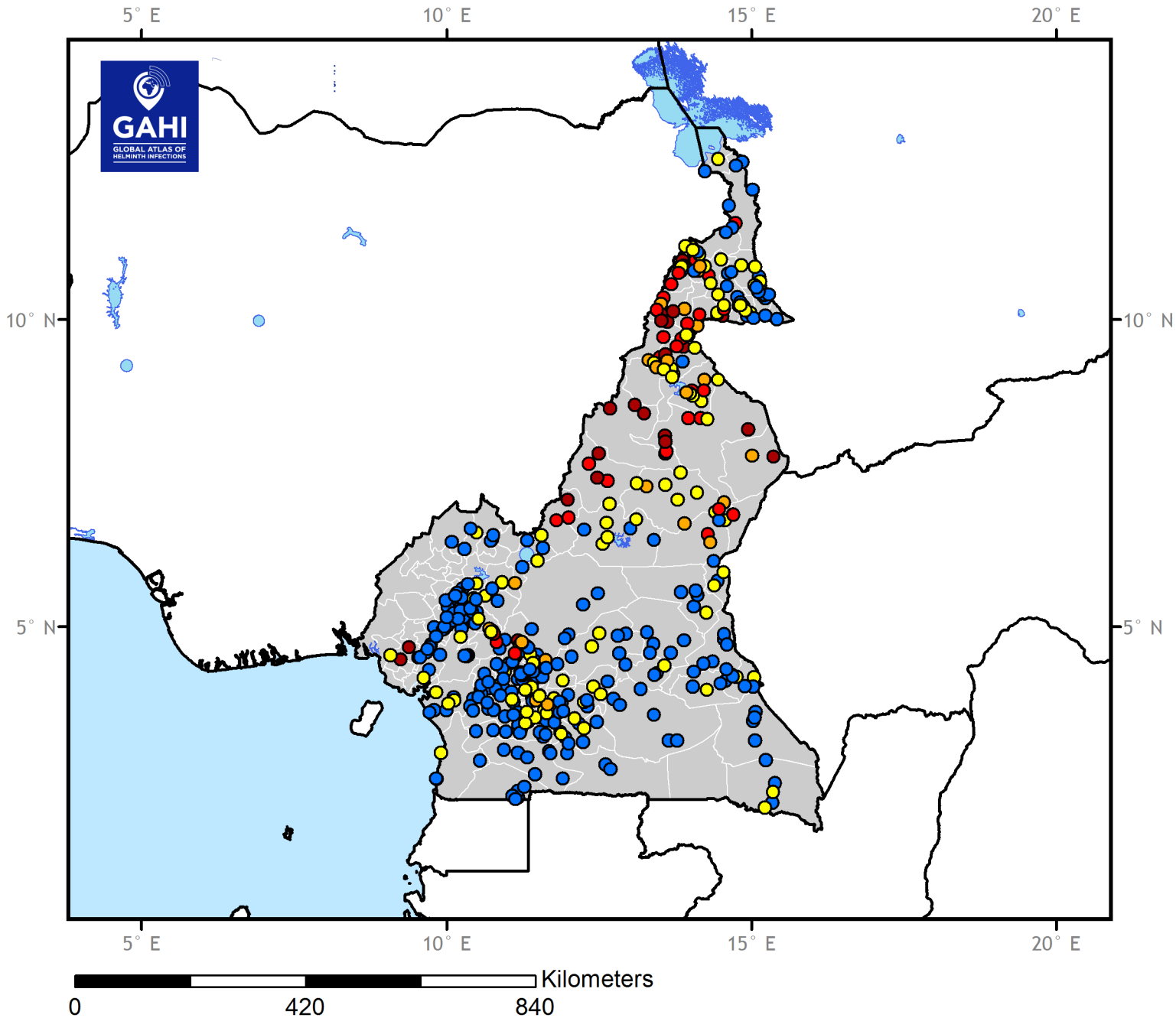


Prevalence and location of *S. mansoni* parasitological surveys and average district-level prevalence



Cameroon



Prevalence (%)

- <1.0
- 1.0-9.9
- 10.0-19.9
- 20.0-49.9
- ≥ 50.0
- Evidence of transmission

Note: district prevalence map displays the maximum prevalence value when concurrent intestinal and urogenital occurs.

