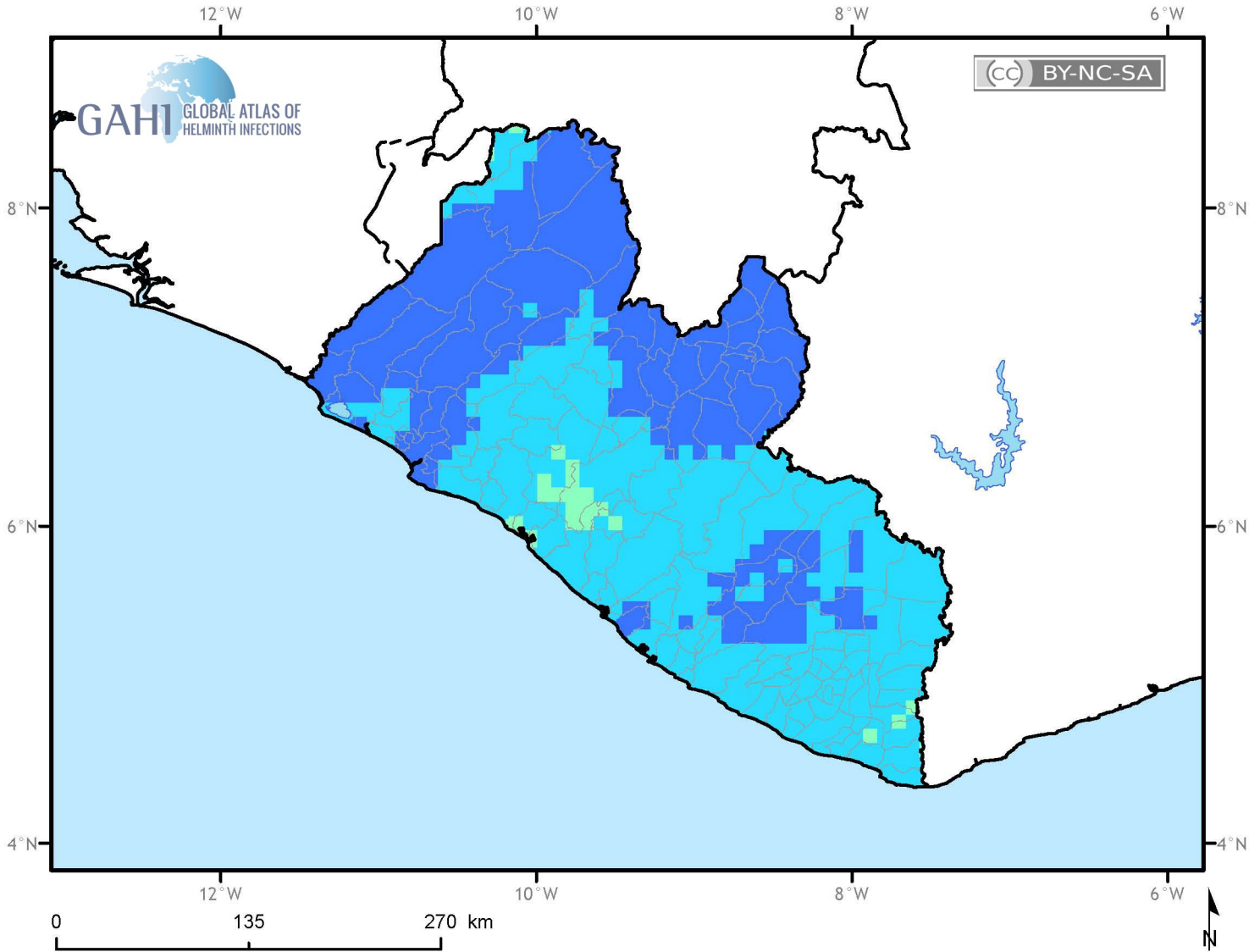


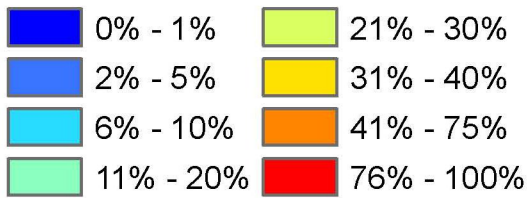
Predicted microfilaraemia prevalence and probability that prevalence is >1% prior to large-scale MDA-based interventions (1990-onwards)



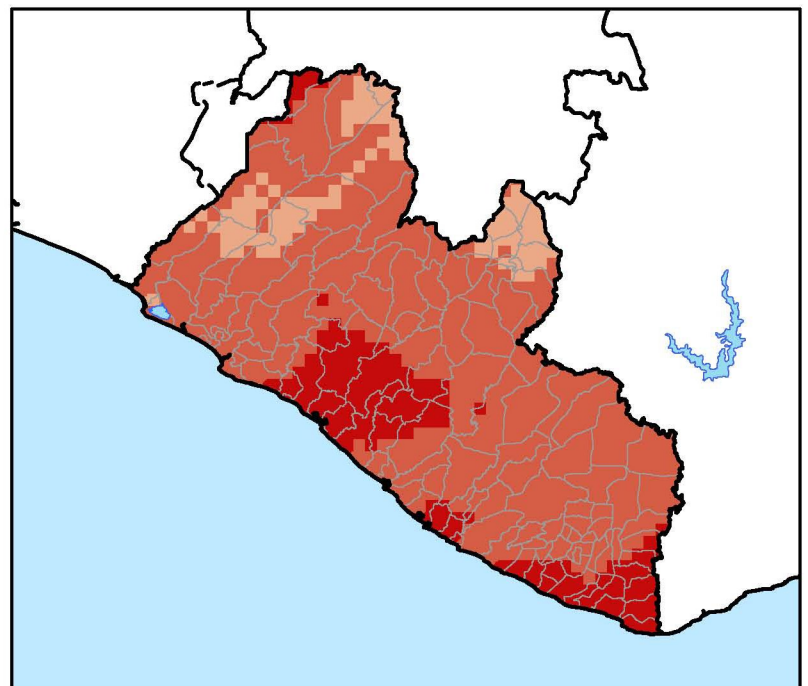
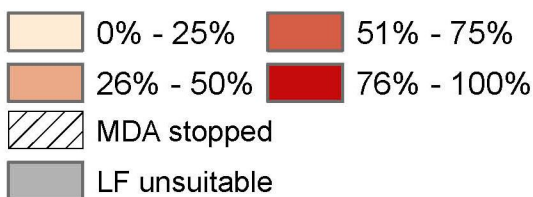
Liberia



Predicted microfilaraemia prevalence (pMf)



Probability of pMf exceeding 1%



Moraga, Cano et al (2015) Parasit Vectors. 24;8(1):560
doi:10.1186/s13071-015-1166-x