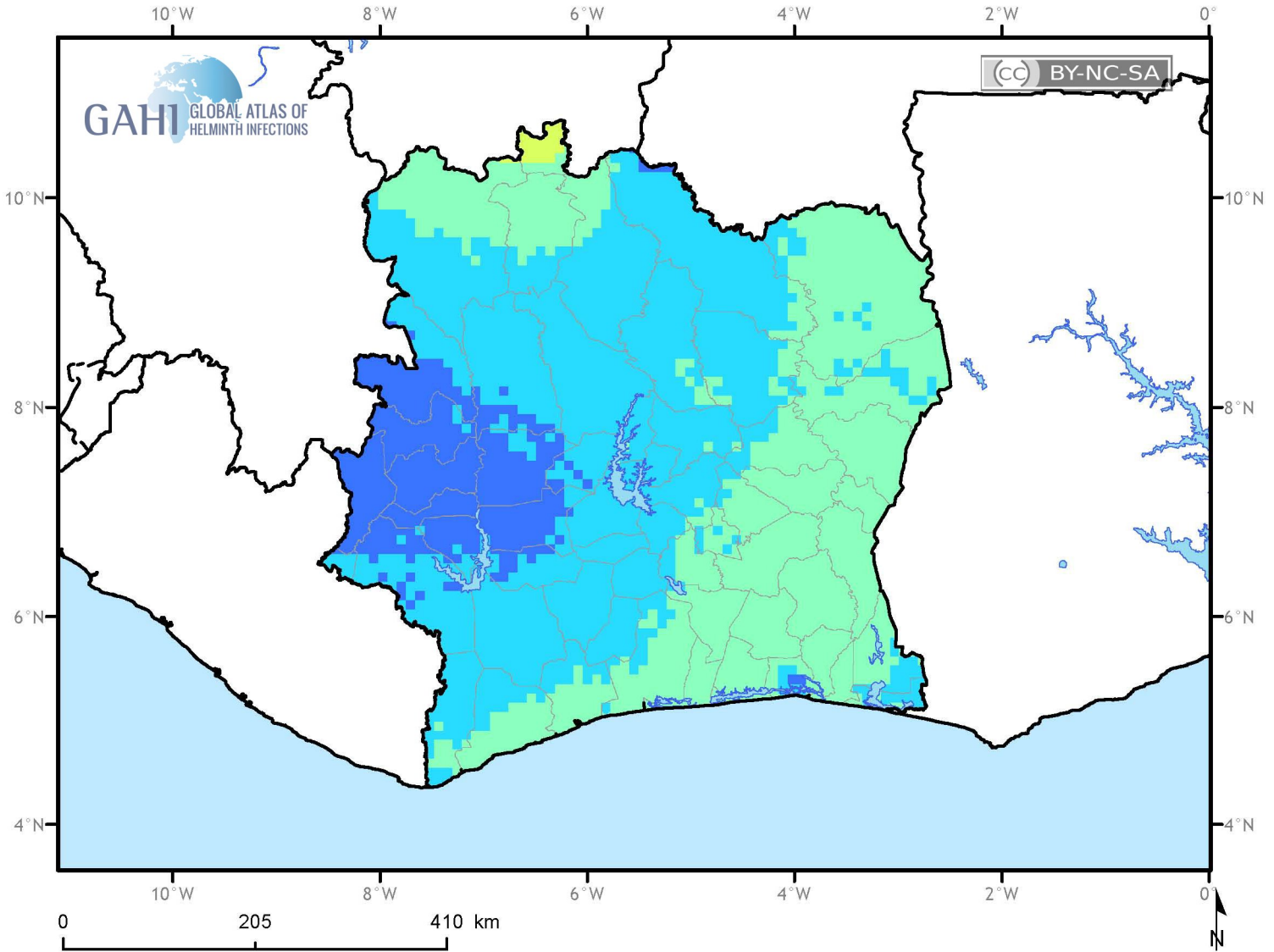


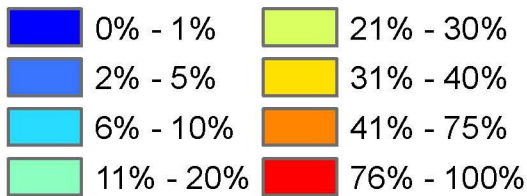
**Predicted microfilaraemia prevalence and probability that prevalence is >1% prior to large-scale MDA-based interventions (1990-onwards)**



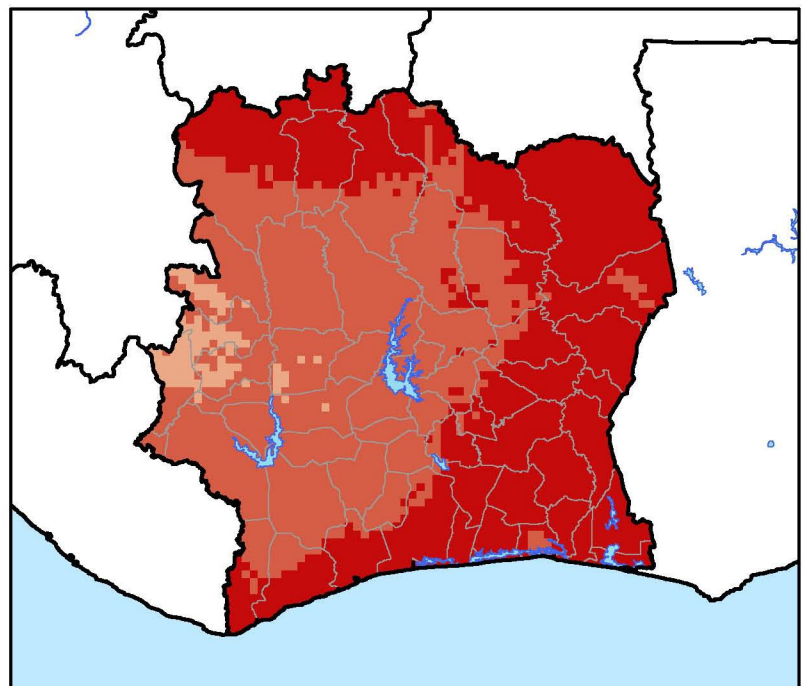
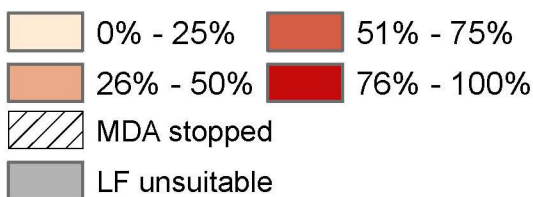
**Côte d'Ivoire**



**Predicted microfilaraemia prevalence (pMf)**



**Probability of pMf exceeding 1%**



Moraga, Cano et al (2015) Parasit Vectors. 24;8(1):560  
doi:10.1186/s13071-015-1166-x