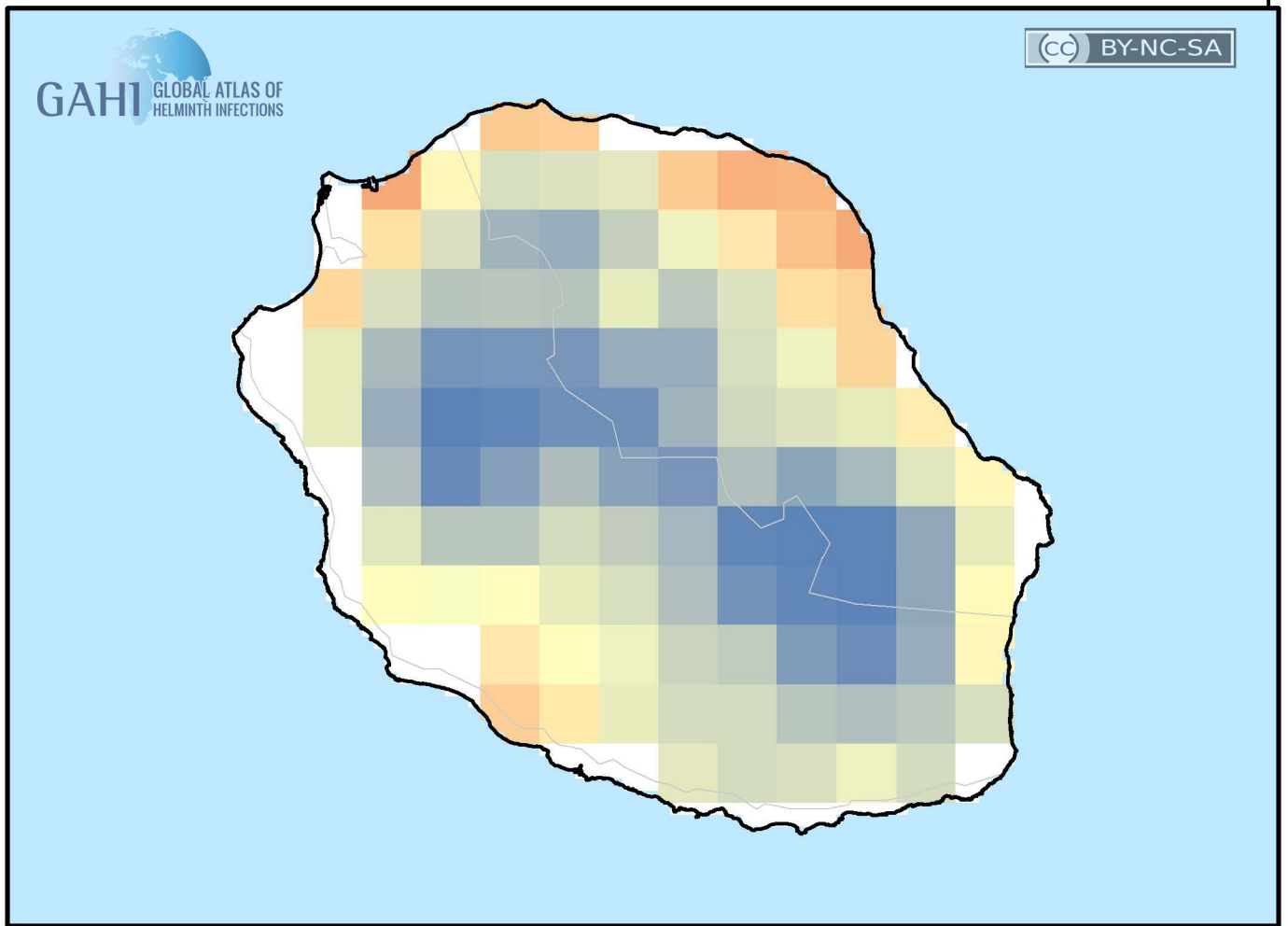


Probability and limits of lymphatic filariasis transmission as predicted by an environmental-based model:



Réunion

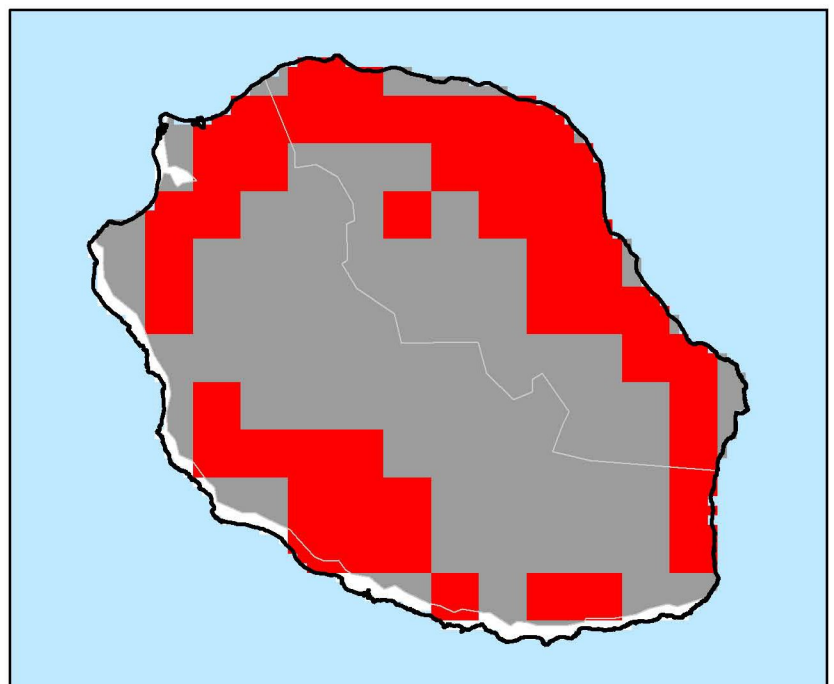
56° E



56° E



Probability of Transmission



Note: Transmission was predicted using boosted regression trees modelling on a range of climatic and population factors and data assembled in a global database of LF.

Cano et al. (2014) Parasit Vectors. 11;7(1):466.
doi:10.1186/s13071-014-0466-x