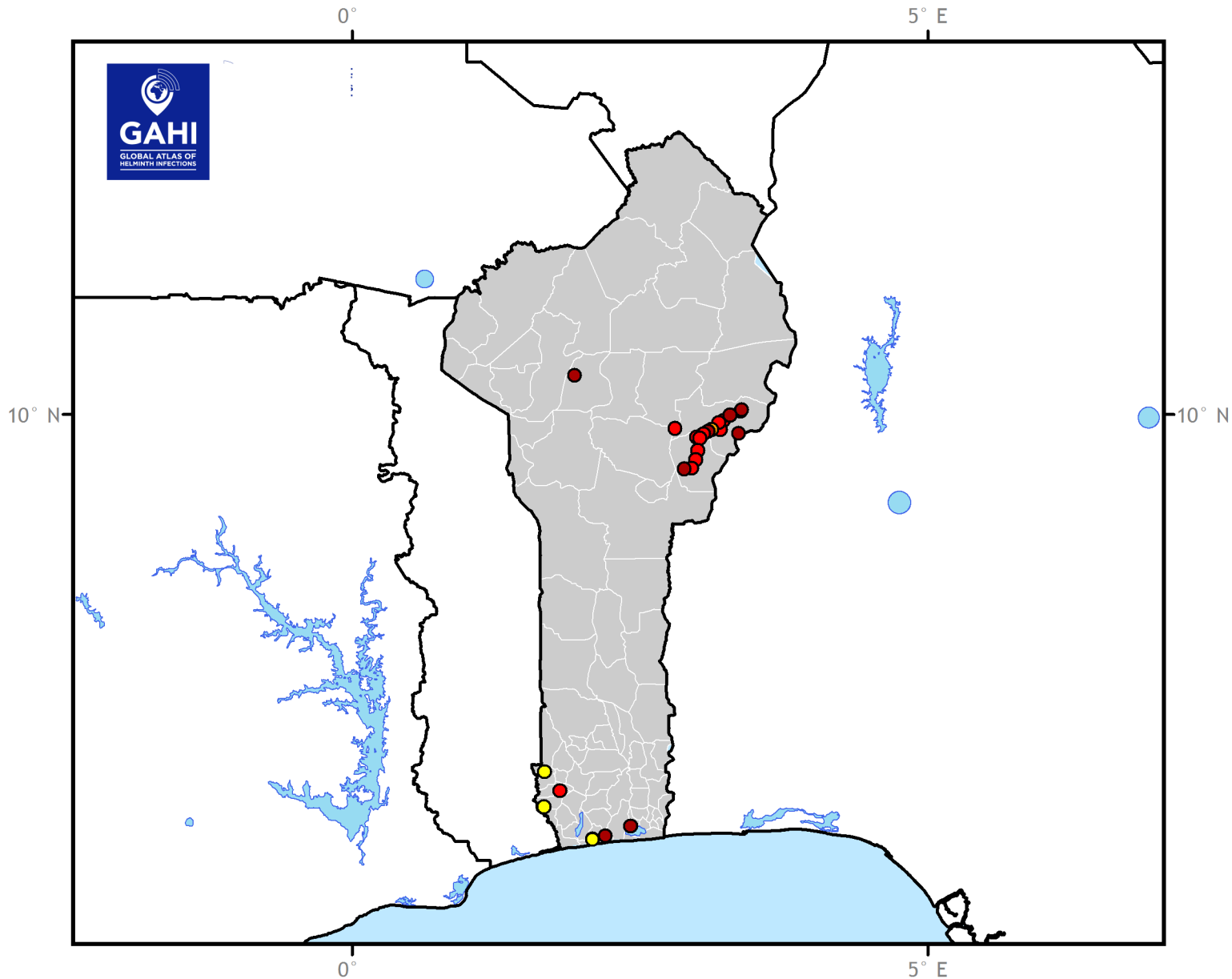


Maximum point prevalence of schistosome infection and location of *S. mansoni* and *S. haematobium* surveys



Benin

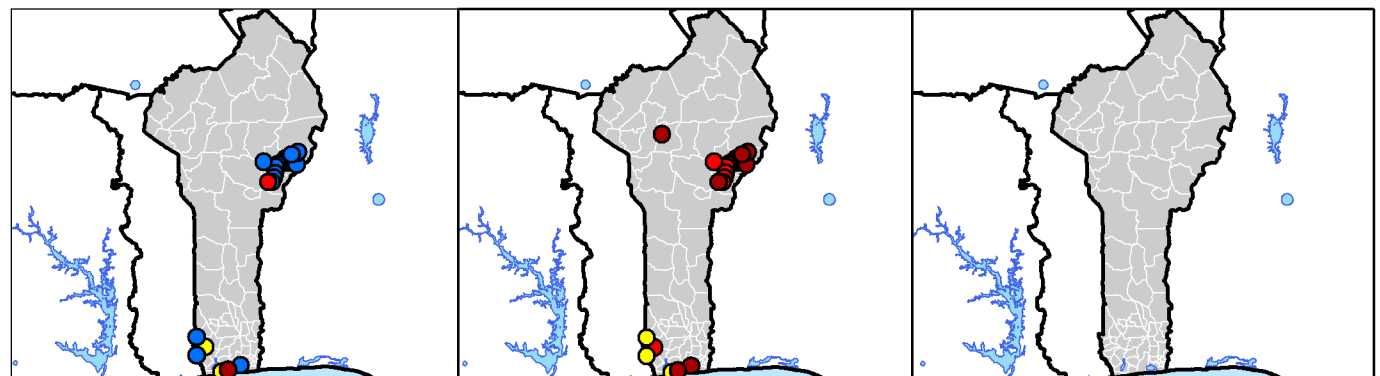


0 235 470 Kilometers

S. mansoni

S. haematobium
parasitological surveys

Blood-in-Urine surveys
(Questionnaires, Haemastix)



Prevalence (%)

- <1.0
- 1.0-9.9
- 10.0-19.9
- 20.0-49.9
- >=50.0

